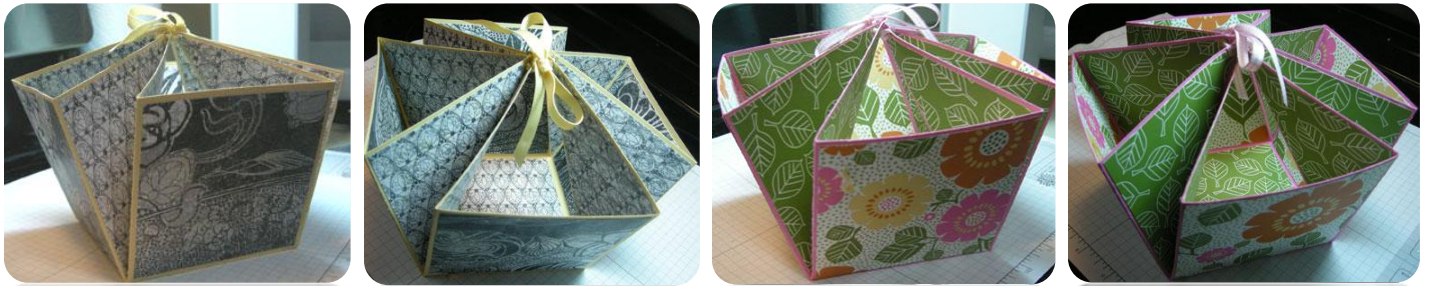


Desk Caddy

Kathleen Innes, Stampin' Up! Demonstrator



Supplies

- Two sheets 12 x 12 designer paper
- One sheet coordinating 12 x 12 cardstock
- 8 eyelets
- Coordinating ribbon

Tools

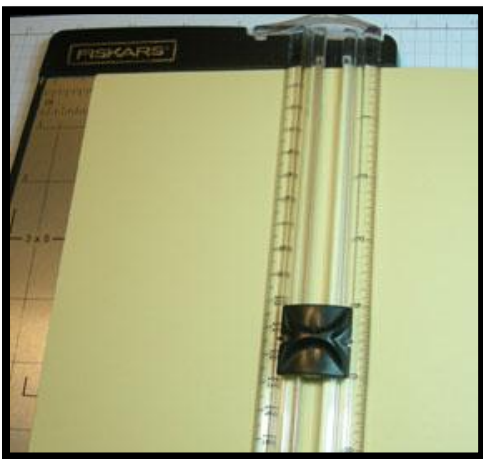
- Paper cutter
- Bone folder & ruler
- Glue stick or SNAIL adhesive
- Crop-A-Dile or eyelet setter
- Ribbon scissors



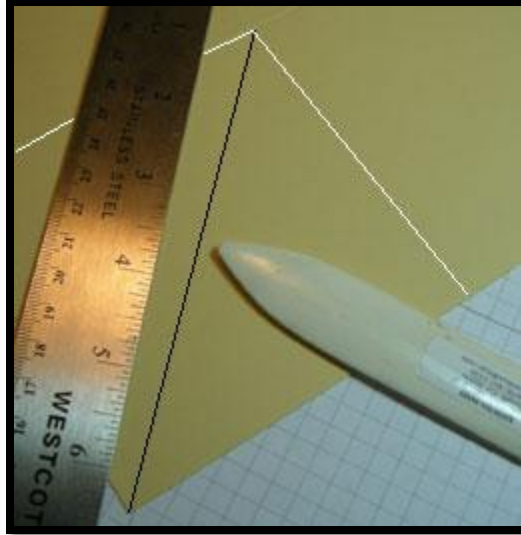
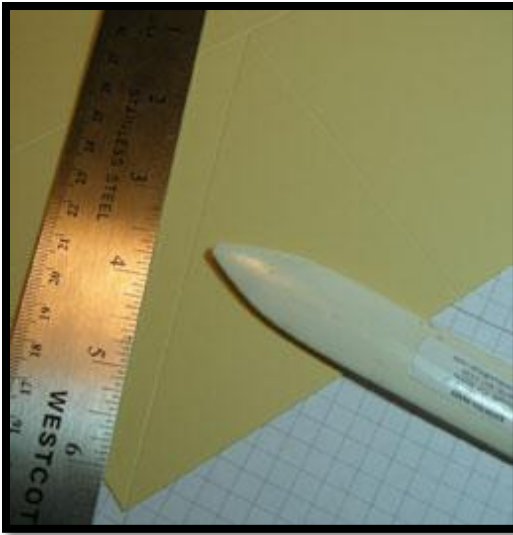
Step 1 - Score the 12 x 12 cardstock

Score at 4" and at 8".

Turn 90 degrees. Score again at 4" and 8".



Score on the diagonal in each of the four corner blocks. The black line in the picture (right below) indicates the score line from the inside corner to the outside corner. (White lines indicate the edges of the 4" corner square.)



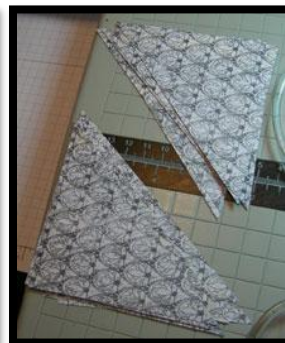
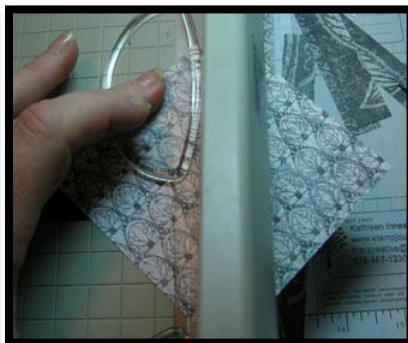
Step 2 – Cut one sheet of designer paper

Cut 8 squares of 3 ¼" x 3 ¼" with the paper you wish to use on the flat sides of the caddy.



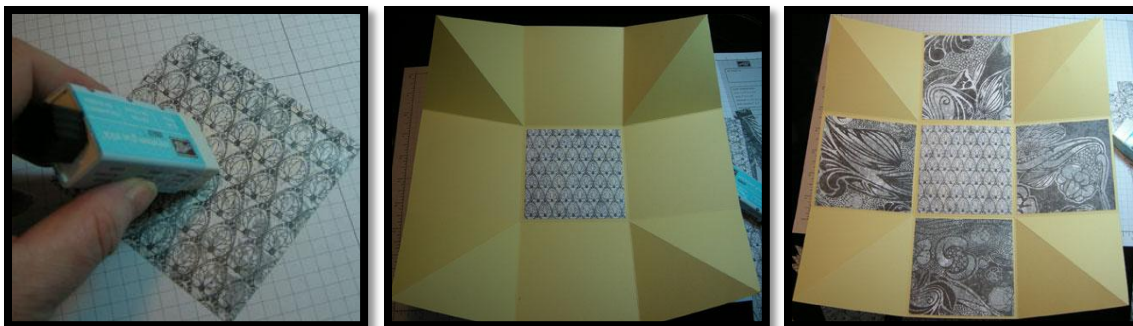
Step 3 – Cut second sheet of designer paper

Cut 9 squares of 3 ¼" x 3 ¼" with the paper you wish to use on the folded sides of the caddy. Set aside one square. Cut each of the remaining 8 squares in half diagonally.

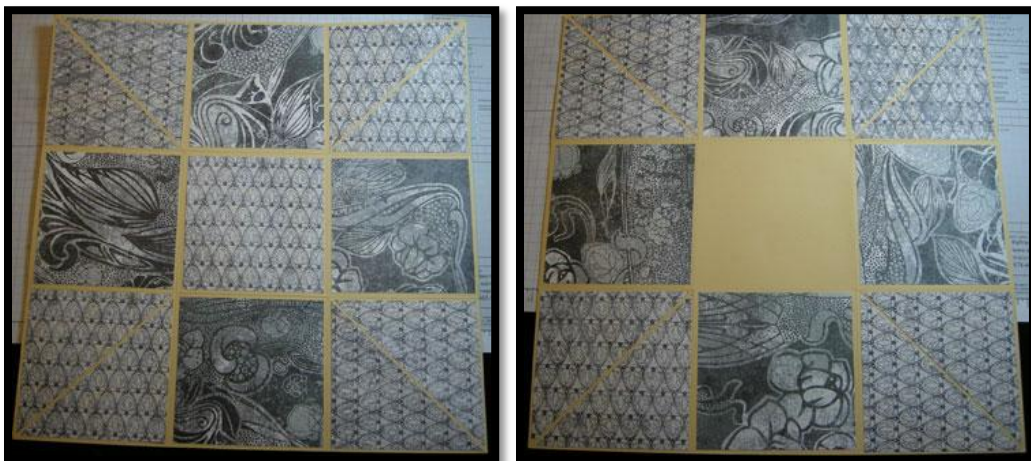


Step 4 – Attach squares

Glue squares to the cardstock, using glue stick or SNAIL adhesive.

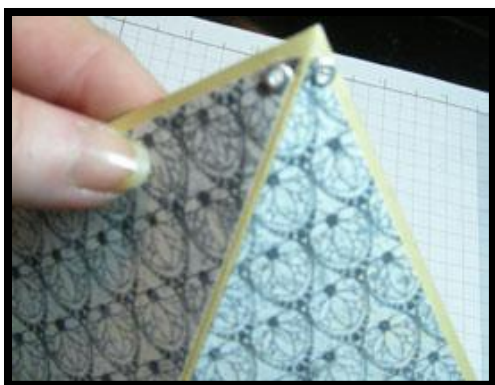


Use the reserved square in the middle inside; this becomes the inside bottom of the caddy. Add the rest of the squares and diagonals to the inside of your cardstock (shown at left below), then flip it over and attach the rest of the squares and diagonals to the outside (shown at right below).



Step 5 – Fold and add eyelets

Fold along score lines and crease well using a bone folder. Add eyelets to each corner as shown below with a Crop-A-Dile or eyelet setter. (Be careful not to place the eyelet holes too close the corner.)



Step 6 – Add ribbon

Thread ribbon through the eyelets and pull taut; this pulls the corners together in the center. Finish with a bow.



This caddy uses Nouveau Chic Designer paper, So Saffron cardstock and So Saffron ribbon.



This caddy uses the Petal Party Simply Scrappin' kit.

Variations

- Change the size: Start with a 9 x 9 piece of cardstock and make your squares $2\frac{3}{4}$ " x $2\frac{3}{4}$ ", or start with a 6 x 6 piece of cardstock and make squares $1\frac{3}{4}$ " x $1\frac{3}{4}$ ". Use twine or elastic cord instead of ribbon.
- Add photos to outside of the caddy, on flat panels and/or folded diagonals.
- Embellish with layered cutouts, punch outs or 3D embellishments such as buttons, brads and die cuts.

All images © Stampin' Up!